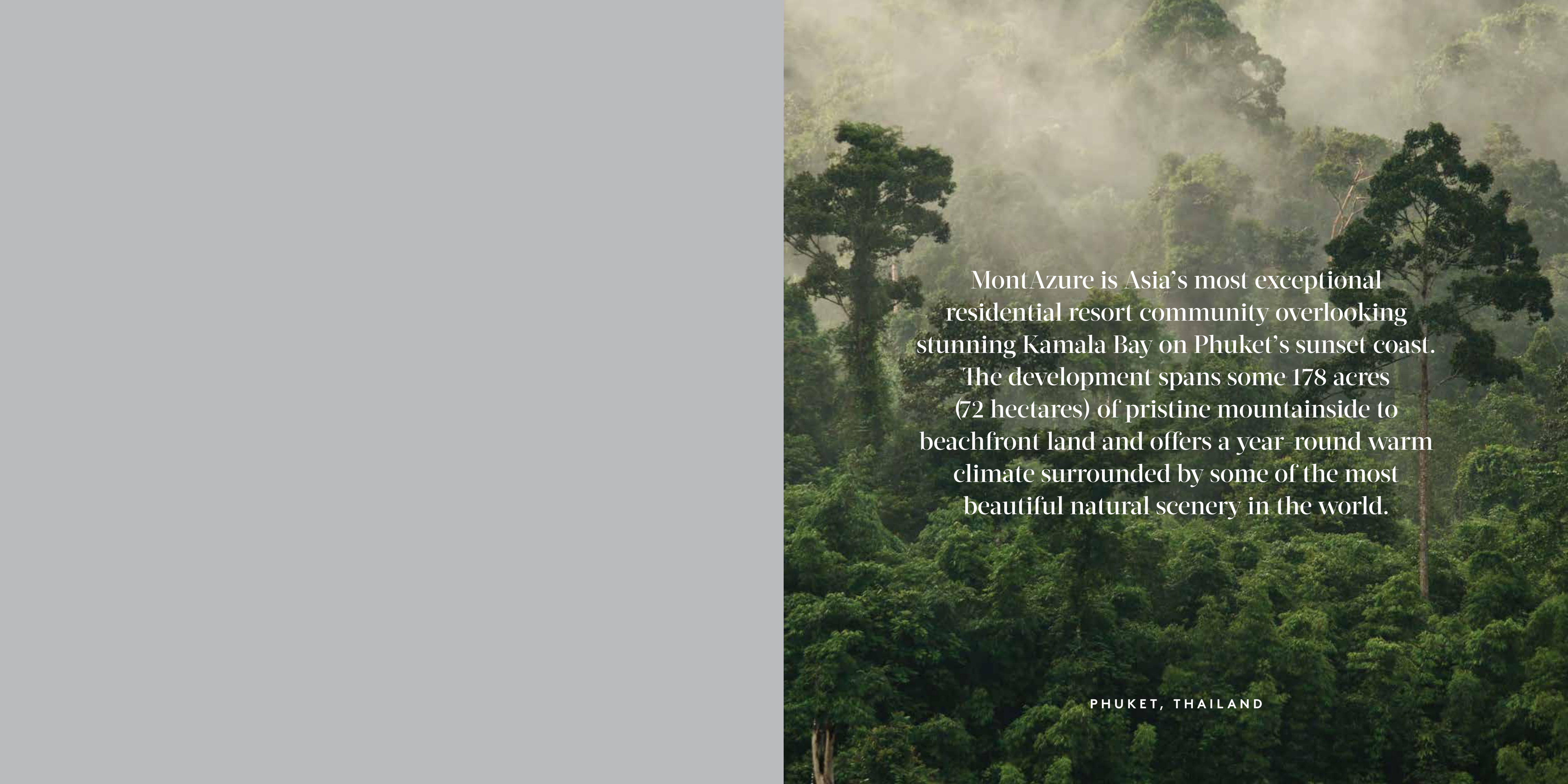




THE ESTATE



MontAzure is Asia's most exceptional residential resort community overlooking stunning Kamala Bay on Phuket's sunset coast. The development spans some 178 acres (72 hectares) of pristine mountainside to beachfront land and offers a year-round warm climate surrounded by some of the most beautiful natural scenery in the world.

PHUKET, THAILAND



“In every headland,
in every curving beach,
in every grain of sand
there is the story of the earth”

- Rachel Carson,
marine biologist and conservationist



— ELEVATED LIVING —

Carefully crafted to make the absolute best of the location, The Estate at MontAzure has been designed to welcome in the stunning island views and soothing natural environment. Indoor and outdoor spaces can either be separated or easily become one, allowing residents the freedom to drift between the two at their leisure.





— ASTOUNDING ARCHITECTURE —

The Estate at MontAzure not only benefits from large private land plots, but also offers owners expansive, beautifully appointed interiors with impressive built up areas.

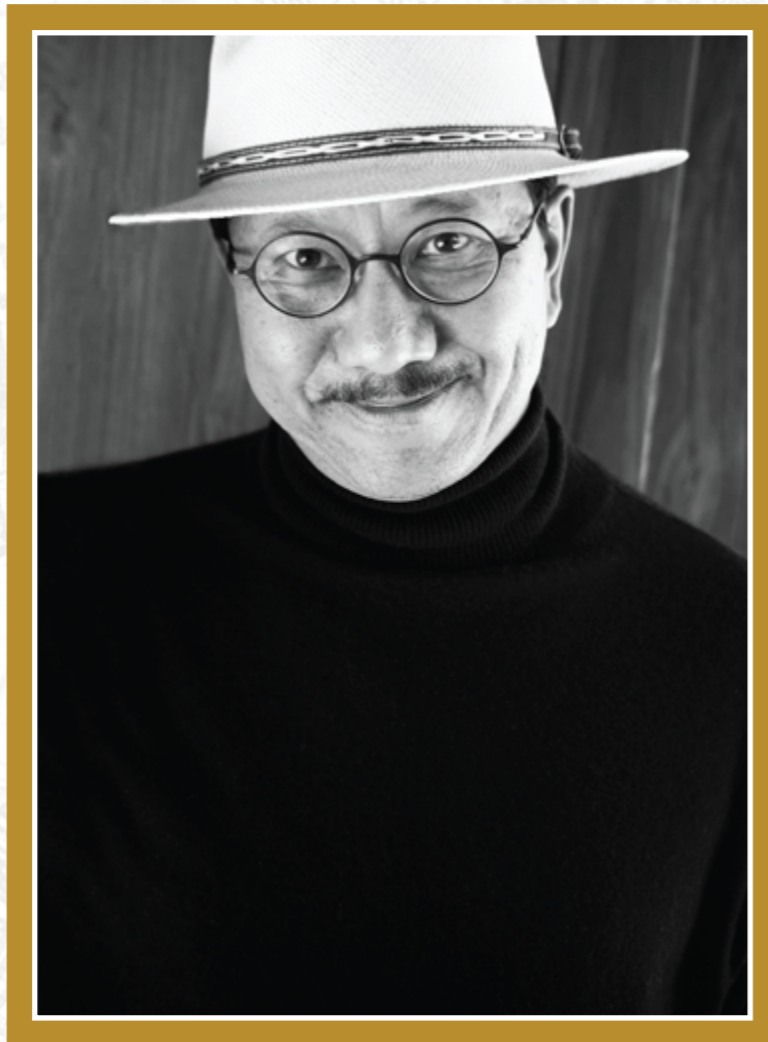


Engaging, environmentally sensitive architecture ensures that the properties blend with the natural surroundings while also offering unique, luxurious living spaces. World class amenities and personalised services complement the breathtaking tropical views to offer the ultimate private resort lifestyle.



— ESTEEMED NATIONAL TREASURE —
“At MontAzure you get to see
a rare beauty, where architecture
and cosmic force come together”

MAHTAR “LEK” BUNNAG



BUNNAG ARCHITECTS

MATHAR “LEK” BUNNAG, is a leading Thai architect specialising in hotel and resort residential design. His intricate works are motivated by the desire to enhance and safeguard cultural heritage and the local environment while embracing the beauty and comfort of contemporary design.

Khun Lek works in Thailand and around the world under Bunnag Architects International Consultants, a practice he established in 1990 that has received extensive recognition and awards. He has personally been awarded the National Artists Award Thailand for architecture and was selected to represent Thailand and exhibit his work at the prestigious Venice Biennale 2014.



Four Seasons Resort, Chiang Mai, Thailand



Kandawgyi Palace, Yangon, Burma



Trident Gurgaon, New Delhi, India

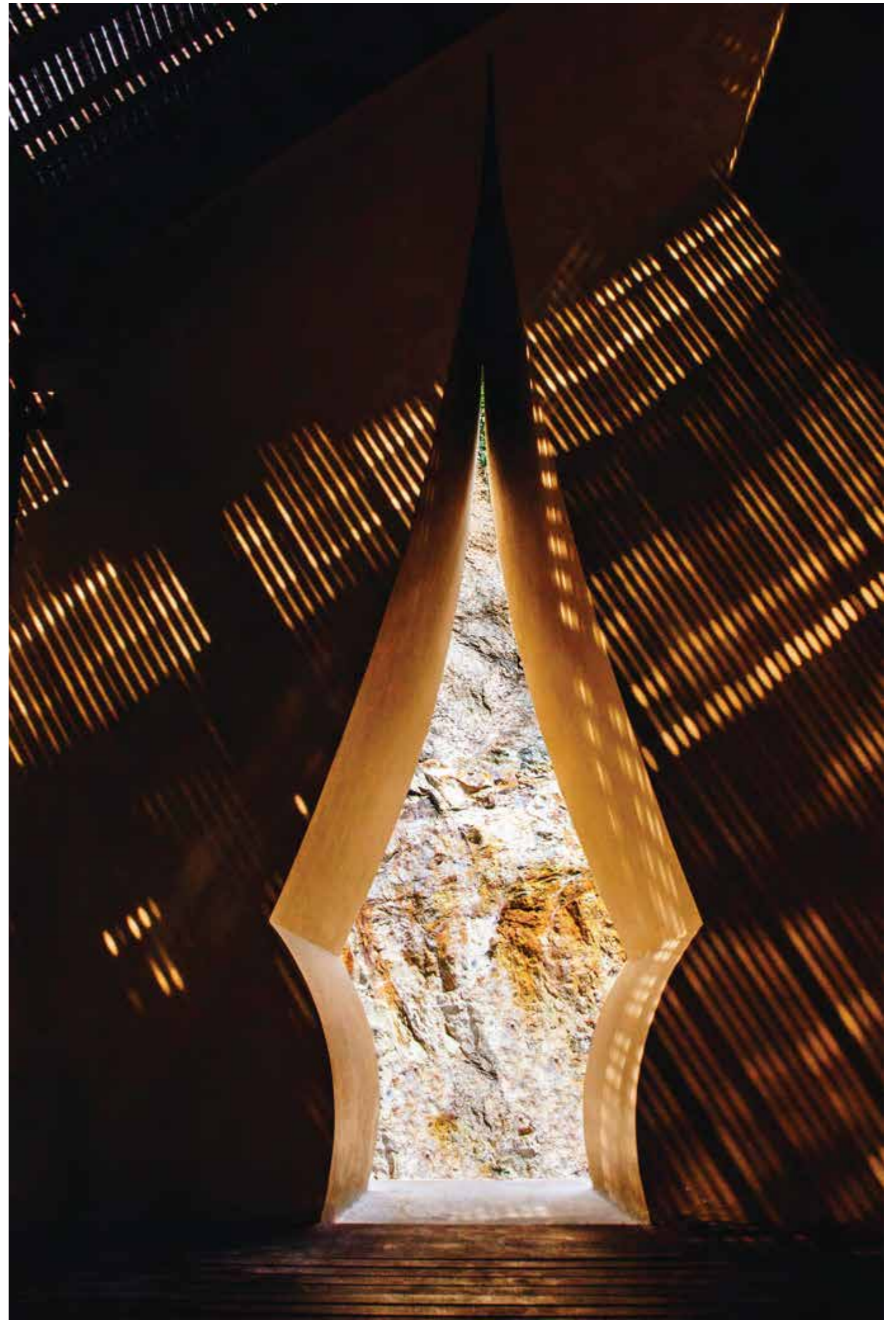
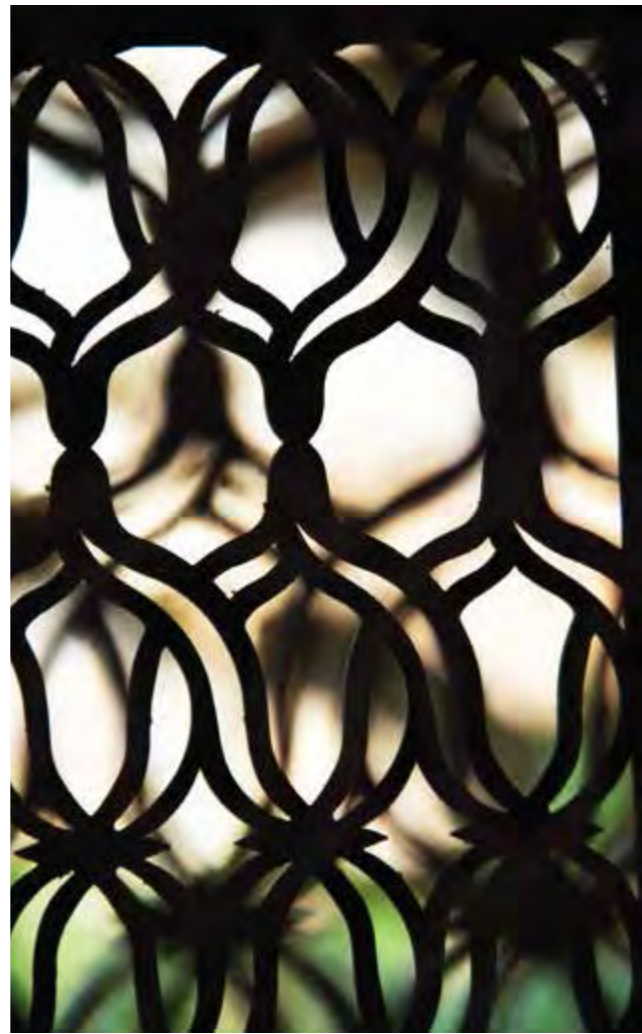
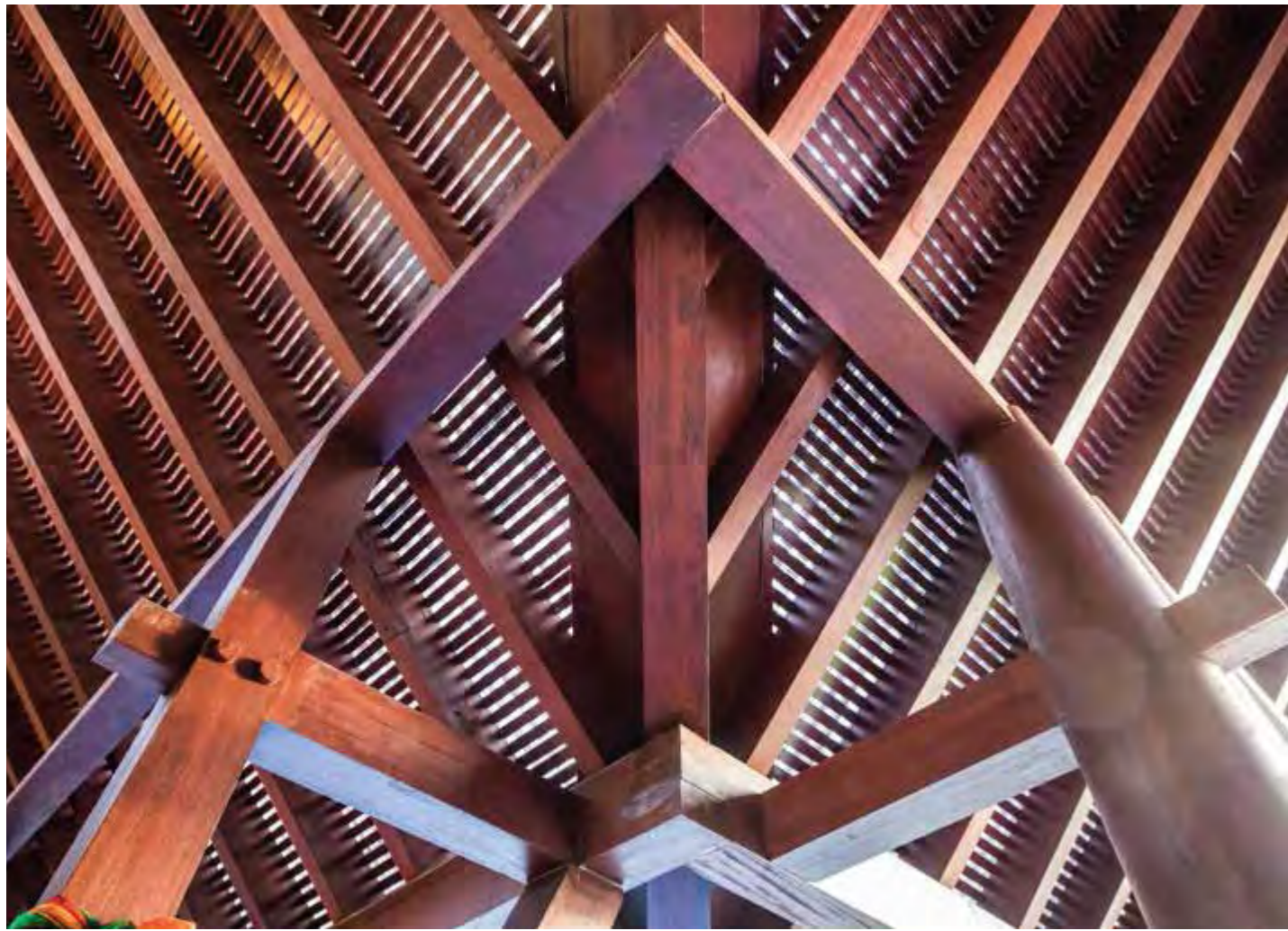


Shiseido Kirana, Bali



Stunning views of Kamala Bay
extend out across the glistening waters of
the Andaman Ocean.







“In the right light, at the right time,
everything is extraordinary.”

– Aaron Rose, artist.



— VISIONARY HOMES —

Designed for total ease of living,
the unique interior spaces in
the Estate creates unique luxurious
personal escapes, whether the focus
is on private or social time,
on active or passive pursuits.



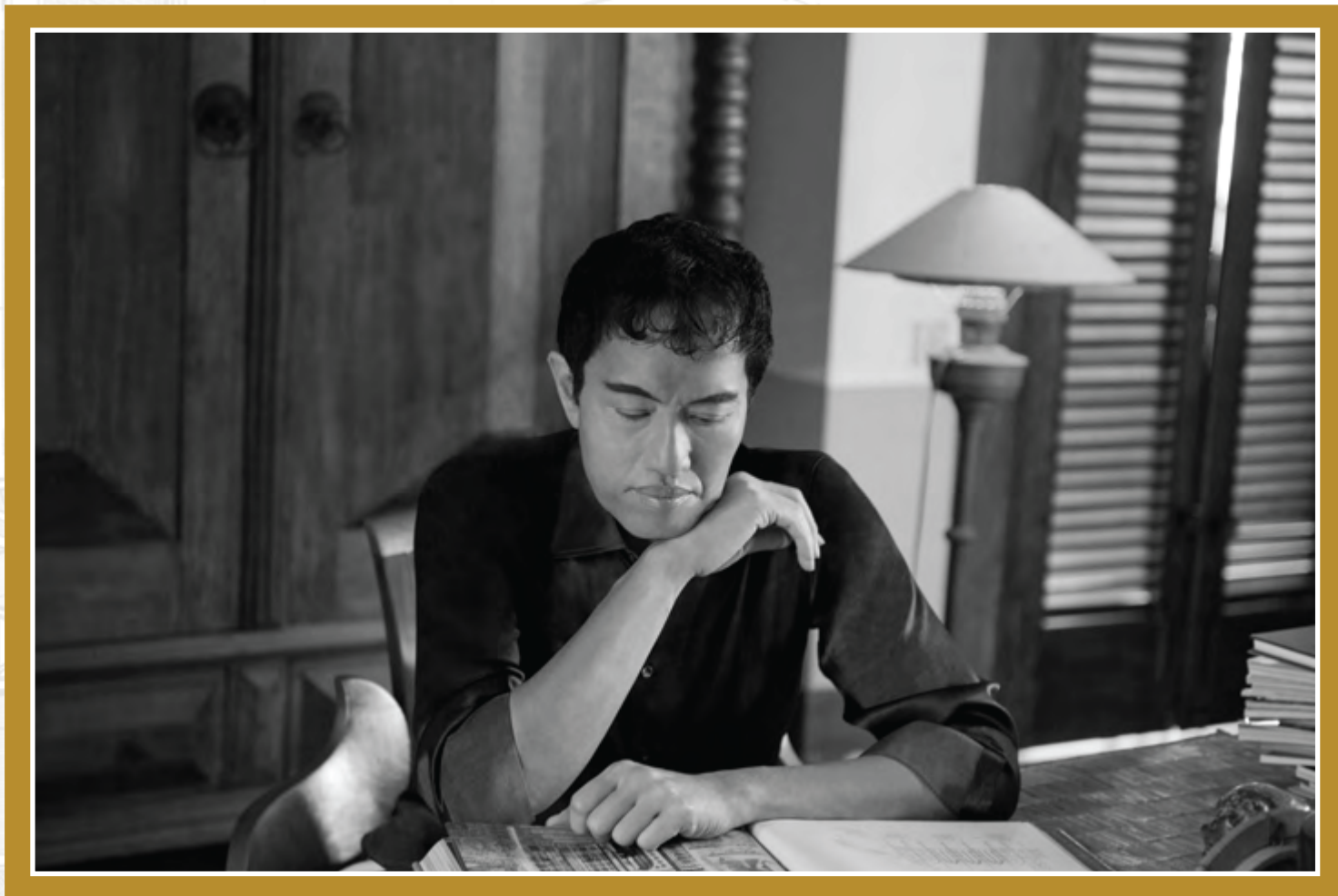
The Estate offers a select few residents an inspired and refreshing alternative to the modern urban lifestyle. Thailand's spirituality plays her part in the stunning designs, as does an appreciation of nature – each aspect complemented by a true understanding of opulent living.



— GRACEFUL INTERIORS —

“It is about living in a serene surrounding, at a vantage point that takes in much more than the sea”

JAYA IBRAHIM

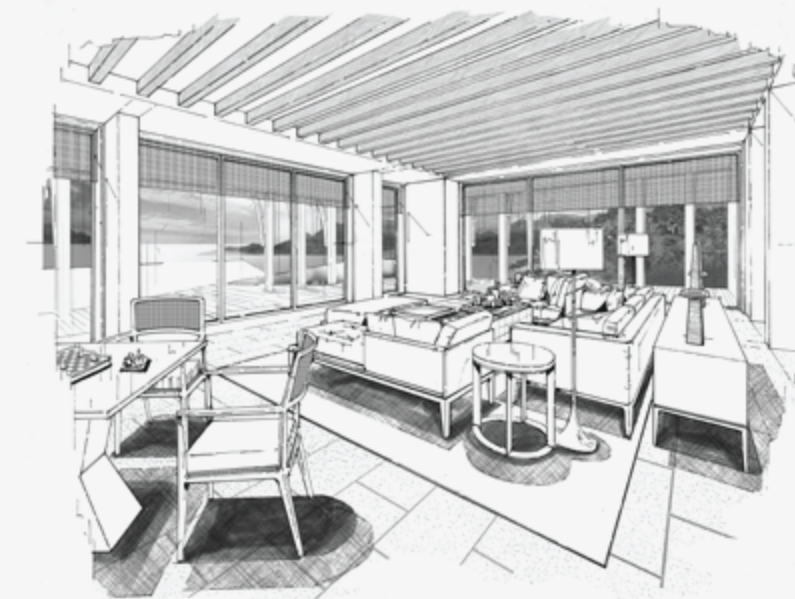


JAYA INTERNATIONAL

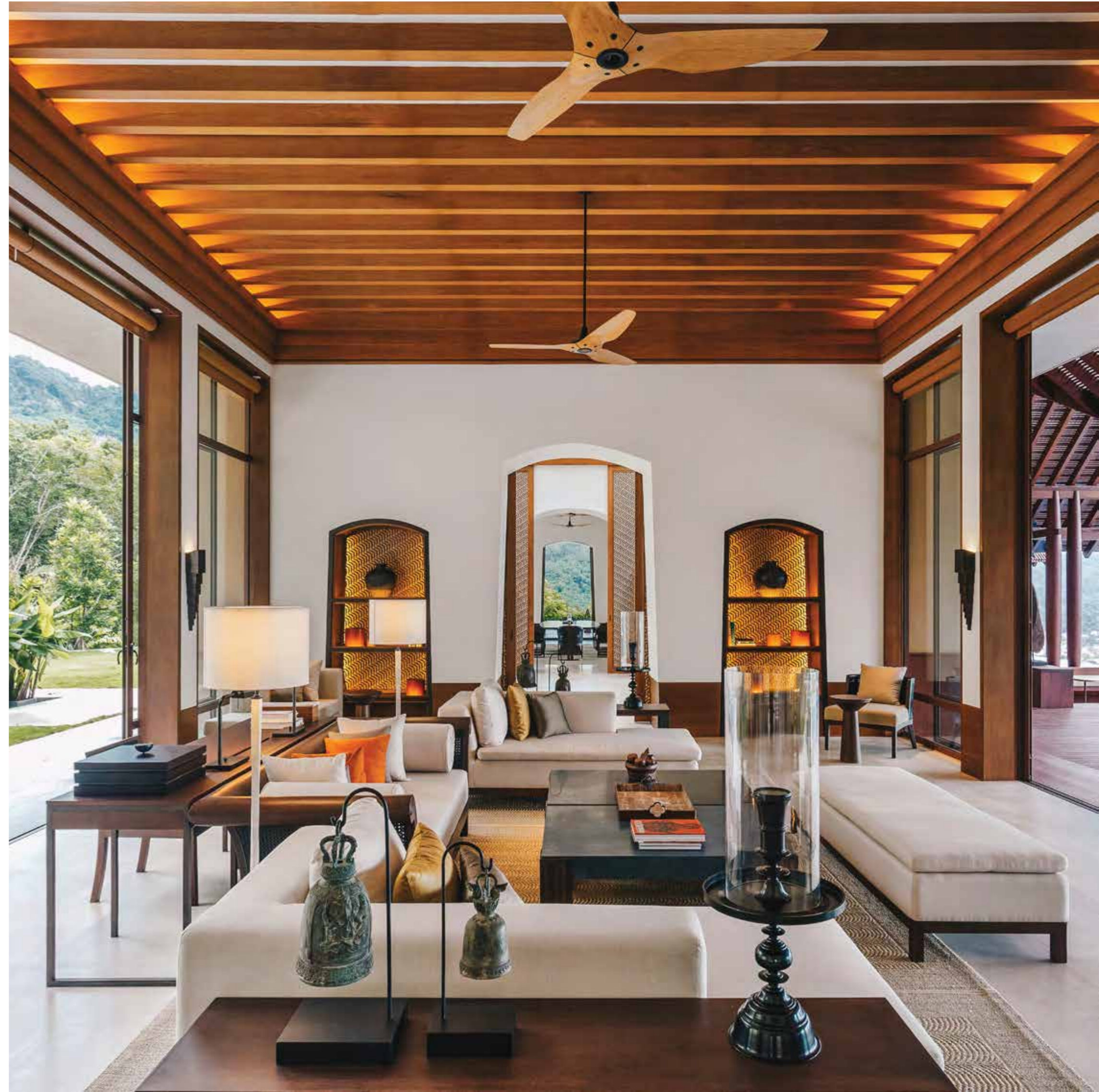
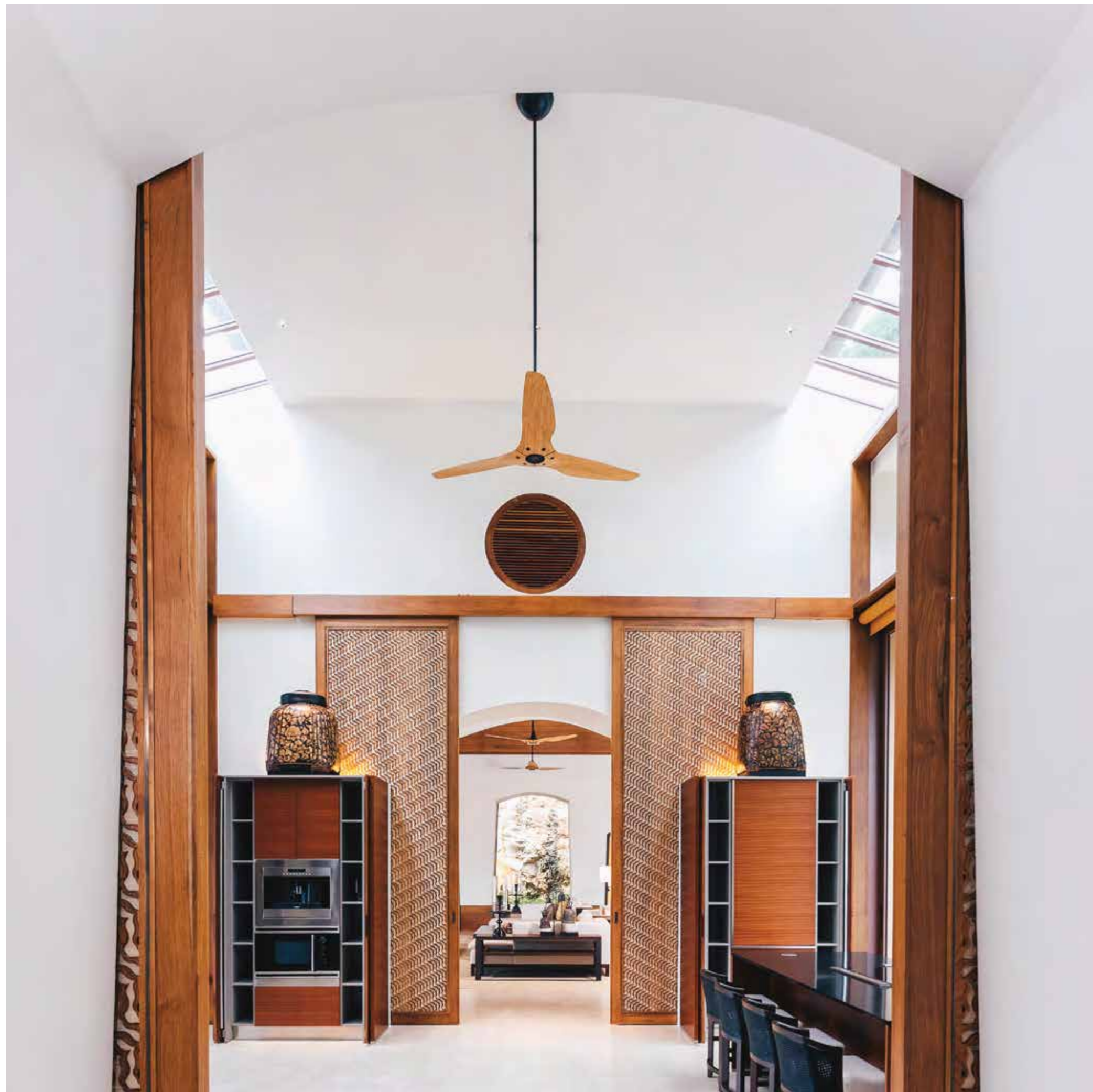


The Estate represents the stunning design legacy left to Thailand by **JAYA IBRAHIM** before he sadly passed. JAYA was one of the world's foremost interior designers and created award-winning projects across the globe. He always held the guiding vision of his work very close to his heart – to find beauty and serenity in every feature rather than seek a definitive expression of a period or style.

JAYA always put the cultural and ecological context at the forefront and drew heavily on the vital elements of the local culture as a source of inspiration, then skilfully integrated them into his design schemes.



With such meticulous attention to detail, Jaya designed The Nam Hai in Hoi An/Danang, Vietnam, Amanfayun in Hangzhou, China, The Summer Palace in Beijing as well as The Setai in Miami Beach to name but a few.





Carefully crafted interiors combine generous amounts of space with consummate comfort and offer a perfect balance of living and dining areas. Leading edge accessories and appliances add the luxury of complete convenience.



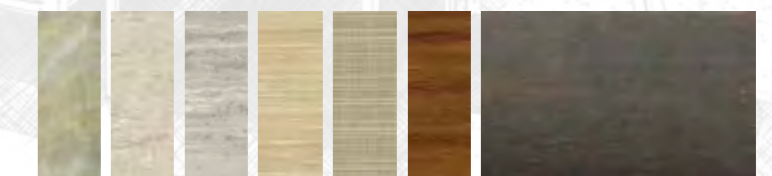


— INSPIRED DESIGN —

The interiors of The Estate offer an exquisite blend of natural elegance and sophisticated luxury.



Hand selected materials include rare and unique elements sourced from around the world to create a signature style that suits the stunning architecture and incredible location of the villas perfectly.



SLOPE TO BE REINSTAITED WITH
NATIVE VEGETATION

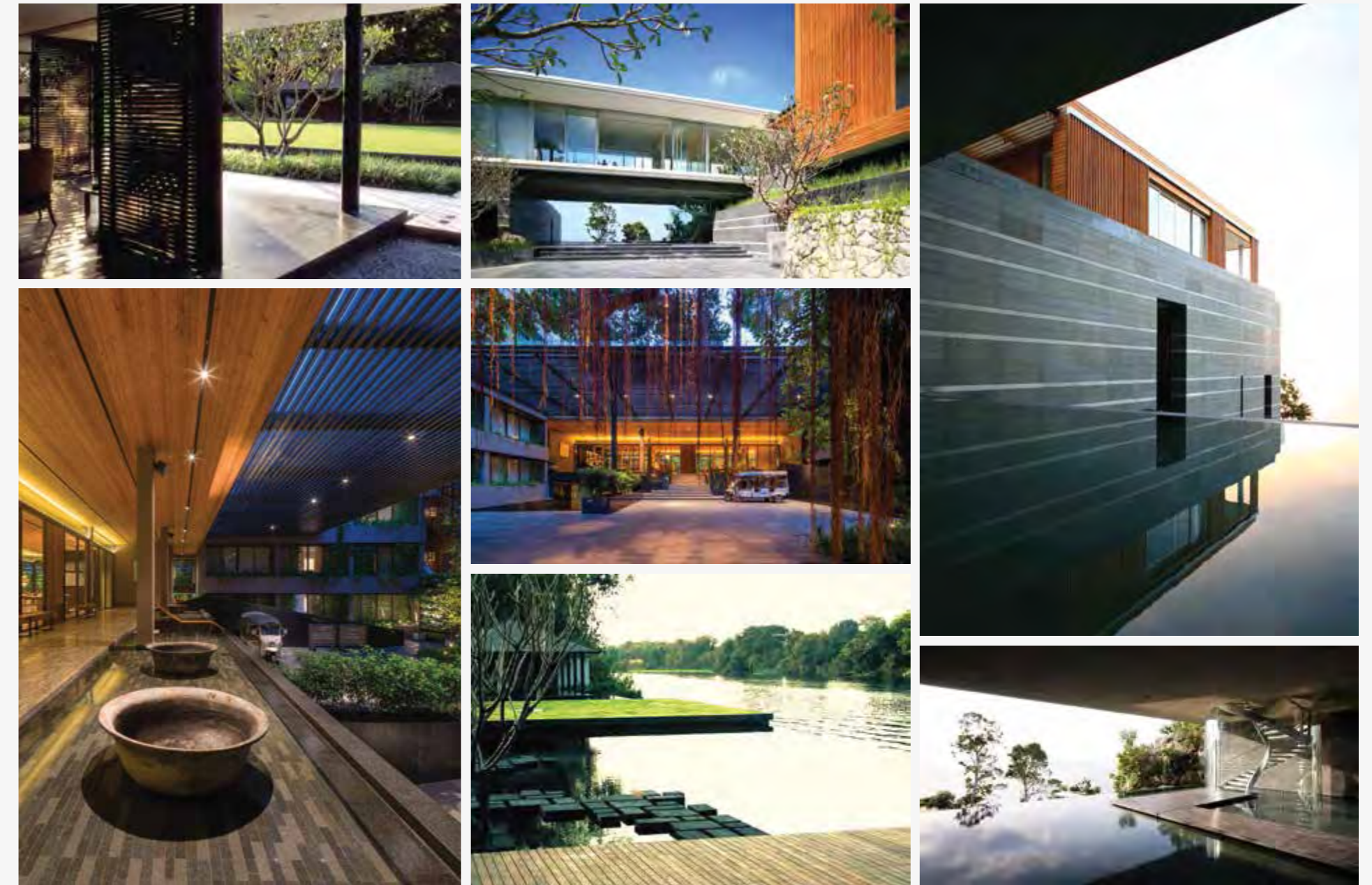
— LEGEND ON THE LANDSCAPE —

“For the landscapes at MontAzure
we crafted unique spaces to truly
live and breath the luxury of nature”

MARTIN PALLEROS



TIERRA DESIGN



Tierra Design was founded by Martin Palleros in Singapore in 1992. It is a highly motivated, multi-disciplinary and multi-cultural design practice with a focus on the quality – not quantity – of projects undertaken.

Palleros is renowned for his design vocabulary, which extends across architecture, landscape design, master planning and interiors, with the highest respect for ecological sensitivity, a finely honed sense of aesthetics and an unerring instinct for realising the potential of a spectacular natural setting. Past projects include Phuket’s Baan Yamu and Twin Palms Hotel, Villa Mayavee on Millionaire’s Mile, The Chedi Hotel in Chiang Mai, plus Metropolitan Hotel and Sukhothai Residence in Bangkok.



An untouched tropical forest
where rich verdant hues meet the
vivid blues of sky and sea.



MontAzure's expanse
of old growth forest
provides a sublime
natural backdrop for
The Estate with easy
access to hiking and
mountain bike trails
that criss-cross the
ocean view hillside.



— NATURE REDEFINED —

A rare gem bathed in constant
ocean views that are reflected in
gentle water features and framed
in tropical flora



— LIFESTYLE DESTINATION —

**Phuket's priceless natural assets
have made it a perennially
attractive destination for
discerning families in search of
a second home or permanent
residence.**

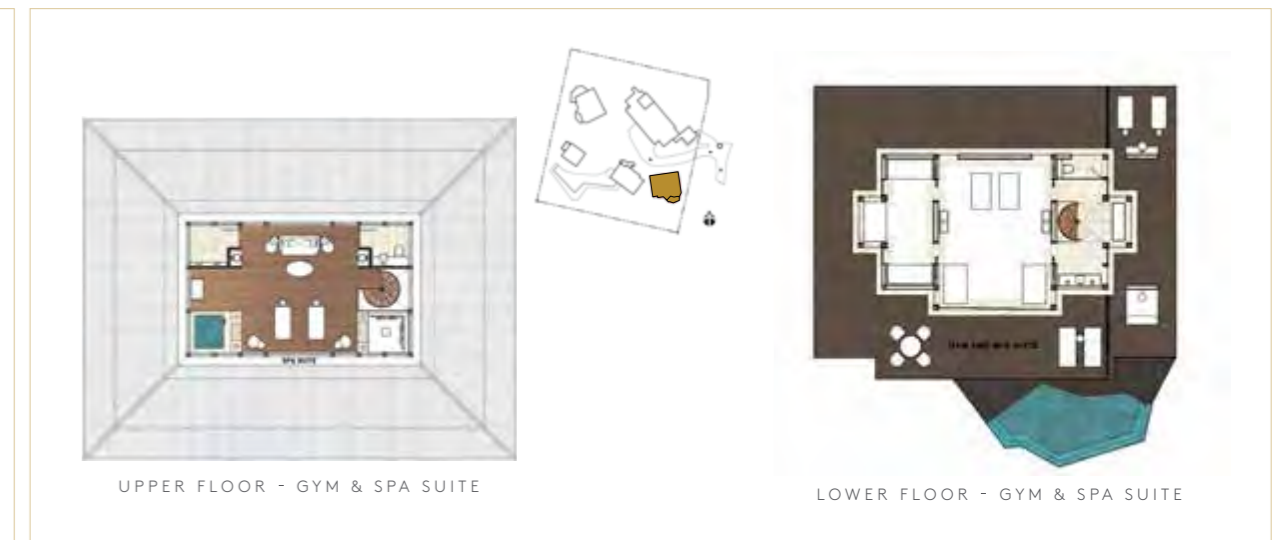
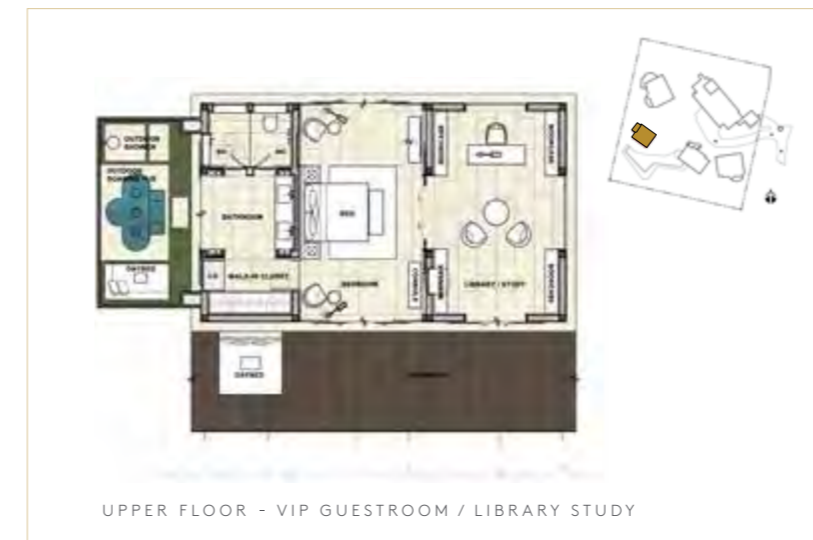


Beyond their luxurious Estate, owners will enjoy privileged access to a pristine stretch of beach and an extensive range of exclusive amenities and services offered along the MontAzure waterfront.



— THE LAYOUT —

Thoughtful planning and sensitive designs
create a natural flow that effortlessly
links each pavilion.



NUMBER OF BEDROOMS	6
PLOT SIZE (sq.m.)	10,200
A/C SPACE (sq.m.)	1,080
Non A/C SPACE (sq.m.)	865
EXTERIOR COVERED AREA (sq.m.)	1,390
EXTERIOR UNCOVERED AREA (sq.m.)	1,270
TOTAL BUILTUP AREA (sq.m.)	4,605

DISCLAIMER: THESE FLOOR PLANS ARE FOR MARKETING PURPOSES AND IS TO BE USED AS A GUIDE ONLY. CHANGES MAY BE MADE DURING THE DEVELOPMENT PROCESS AND DIMENSIONS, FIXTURES, FITTINGS, FINISHES AND SPECIFICATIONS ARE SUBJECT TO CHANGE WITHOUT NOTICE.

— THE DEVELOPER —

A consortium of three of the most prestigious property and hotel investment groups in Asia.



One Oasis, Macau



The Parkland Srinakarin, Bangkok



Capitol Building, Singapore



Narai Group (Thailand) part of Hua Kee group, Arch Capital (Hong Kong) and Philean Capital (Singapore), part of Pontiac Land Group – have teamed up to launch what will be Asia’s most exceptional residential resort development. From an investor’s perspective, the security offered when purchasing resort residences backed by proven developers is becoming a major differentiator, along with factors such as well-known architects and designers, as well as location.

— MASTER PLANNED COMMUNITY —

Setting a new benchmark for luxury tropical living with like-minded partners and a commitment to excellence.



MontAzure is envisaged to be an exclusive community over an area of 454 rai (178 acres) that will consist of the following elements:

- Intercontinental Hotel and Resort, Phuket
- Exclusive private Hillside Estate
- Twinpalms Residences MontAzure – 75 beachfront condominium
- Internationally recognized beach clubs – Cafe Der Mar
- A lifestyle retail neighborhood mall

The master plan has also been designed to include eco-sustainable hillside developments, a medical wellness spa and retirement village.

The low-density approach to the site allows for organic community gardens, rainwater harvesting from the natural catchment, and adventure and hiking trails throughout a 200 rai protected rain forest nature reserve.

— A SUBLIME LOCATION —

Situated in the heart of the island's sought after sunset coast on Kamala Beach, MontAzure is a perfect location for buyers looking to make the most of Phuket's sophisticated resort lifestyle.

PHUKET is Thailand's largest island and a major Asian tourist destination with a well developed infrastructure catering to visitors from across the globe. Phuket is easily accessible by direct daily flights from most regional hubs with links to all major international markets.



TRAVEL TIMES

Phuket International Airport	35 mins
Phuket Town	40 mins
Bangkok Hospital Phuket	40 mins
Kajonkiet International School	35 mins
Central Festival Phuket Shopping Mall	35 mins
Red Mountain Golf Course	30 mins
Laguna Golf Course	15 mins
Surin Beach	5 mins
Patong Beach	15 mins



KAMALA BEACH: this well-enclosed bay and fishing village surrounded by forested hills is one of the most beautiful places in Phuket. With its quieter pace, over the last few years, Kamala has become a favoured spot for retirees and other long-term visitors.

MontAzure occupies the northern part of Kamala Bay and offers the last large-scale beachfront opportunity in the heart of Phuket's exclusive west coast. On the headland to the south – known as “Millionaire’s Mile” – there are a number of luxury villa and resort developments. Easy access to a multitude of nearby attractions and activities, including sport and marine facilities, the historic Phuket Town, retail malls, and vibrant nightlife options. World-class education and medical operators have established themselves within a short drive from Kamala.





ASIA PACIFIC
PROPERTY
AWARDS
DEVELOPMENT

in association with

The Telegraph

★★★★★

BEST MIXED-USE
DEVELOPMENT
THAILAND

MontAzure
by Kamala Beach Resort
& Hotel Management
Co., Ltd.

2016-2017



ASIA PACIFIC
PROPERTY
AWARDS
DEVELOPMENT

in association with

The Telegraph

HIGHLY
COMMENDED

PROPERTY
SINGLE UNIT
THAILAND

The Estates at
MontAzure
by Kamala Beach Resort
& Hotel Management
Co., Ltd.

2016-2017



mountain to oceanside escape

MONTAZURE.COM

THE DEVELOPMENT: 13 LUXURIOUS OCEAN VIEW ESTATES · 75 LUXURY FREEHOLD BEACHFRONT
CONDOMINIUMS · A WORLD-CLASS INTERNATIONALLY-BRANDED ANCHOR RESORT · 3 PRIVATE BEACH
CLUB FACILITIES · INTERNATIONALLY BRANDED PUBLIC BEACH CLUB · LIFESTYLE RETAIL CENTRE ·
RETIREMENT VILLAGE · MEDICAL WELLNESS RESORT · A PROTECTED NATURE RESERVE

